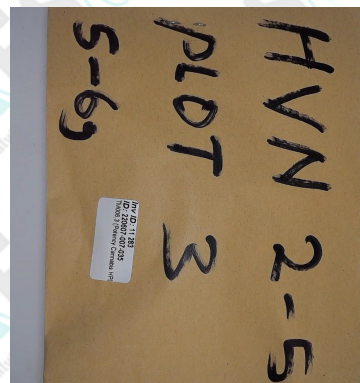


Certificate of Analysis

Sample ID: 220607-007-035
Retention Sample ID: 11 283
Client (Code) Name: (CAN0419) Hempvolution Europa
Client Address: Chitedze, Mchinji road, Lilongwe, Malawi
Batch: Plot 3 (HVN 2-5)
Date Receipt: 2022/06/14 12:25:07
Date Report Released: 2022/06/29 09:50:36
Sample Type: Plant Material
Package Condition: Intact
Received By: PMYBURGH
Sample Amount: 5 gram
Tamper Proof: No

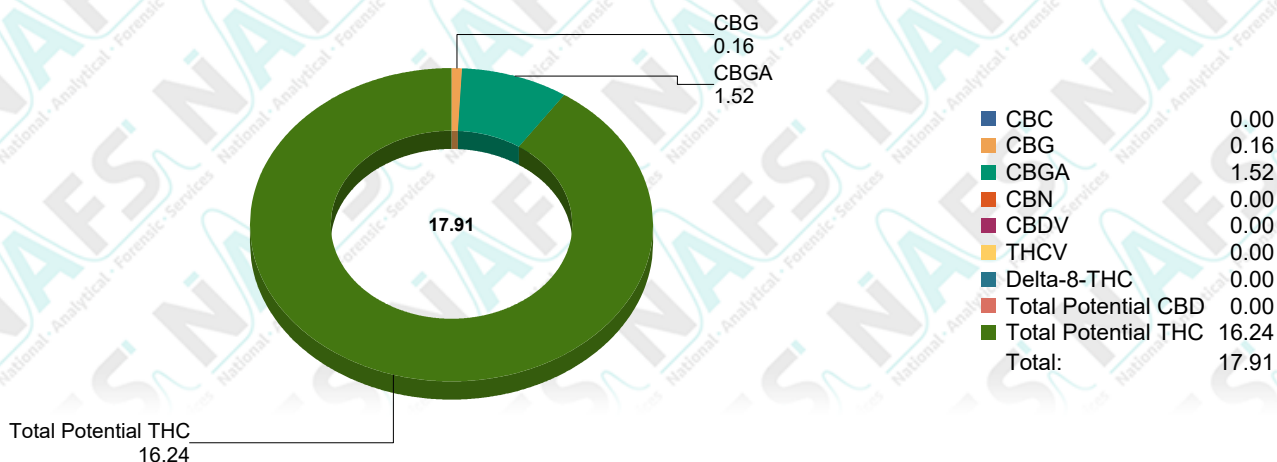


Test Name: TM006.3 (Potency Cannabis HPLC) (220607-007-035)

Specification: N/A
Test Method: *TM006.3
Sampling Method: SH007

Analyte	Results	*Std Dev.	*Spec Limits
CBC	ND % Weight	% Weight	N/A
CBD	ND % Weight	% Weight	N/A
CBD-A	ND % Weight	% Weight	N/A
CBD-V	ND % Weight	% Weight	N/A
CBG	0.155 % Weight	+ - 0.031 % Weight	N/A
CBG-A	1.517 % Weight	+ - 0.209 % Weight	N/A
CBN	ND % Weight	% Weight	N/A
Delta-8-THC	ND % Weight	% Weight	N/A
Delta-9-THC	2.702 % Weight	+ - 0.034 % Weight	N/A
THC-A	15.434 % Weight	+ - 1.229 % Weight	N/A
THC-V	ND % Weight	% Weight	N/A
Total Potential CBD	ND % Weight	% Weight	N/A
Total Potential THC	16.238 % Weight	+ - 1.044 % Weight	N/A

Analyst: AWRBKA 2022/06/27 13:38



*ND (Not Detected)

*The current test method version is Validated

*Standard Deviation (Uncertainty of measurement of applicable duplicate sample)

*Specification Limits (Specified according to pharmacopeial or client specification limits where applicable)

Interpretations and Opinions:

Samples were analyzed as received, subsampling of the interlaboratory comparison was performed by the client. Results may vary according to the sampling plan employed to obtain a representative sample for each laboratory.

Additions, Deviations & Exclusions:

None

It should be noted that NAFS will only analyze the sample/s received. This sample cannot be regarded as representative of entire batch or crop. It is the responsibility of the client to ensure a representative sample is taken in an appropriate tamper proof sample container. NAFS cannot be held liable for negligent handling, storage and transport of client samples, prior to receipt. Any complaints may be directed toward NAFS using info@nafs.co.za (QA005)

Laboratory Manager

Released By: Henrick Viviers

Released On: 2022/06/29 09:50:36

This certificate of analysis shall not be reproduced except in full, without written approval of NAFS. The information contained in this communication from the sender is confidential. It is intended solely for use by the recipient and others authorized to receive it. If you are not the recipient, you are hereby notified that any disclosure, copying, distribution or taking action in relation of the contents of this information is strictly prohibited and may be unlawful. The results obtained may be used for anonymous statistical research purposes. NAFS cannot be held liable for any loss or damage arising from, directly or indirectly related to, sample test