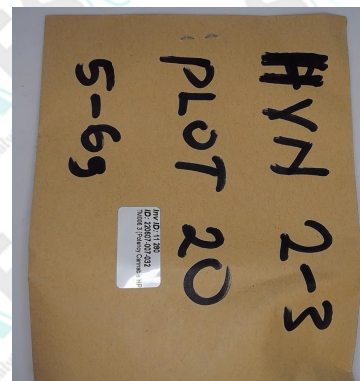


# Certificate of Analysis

**Sample ID:** 220607-007-032  
**Retention Sample ID:** 11 280  
**Client (Code) Name:** (CAN0419) Hempvolution Europa  
**Client Address:** Chitedze, Mchinji road, Lilongwe, Malawi  
**Batch:** Plot 20 (HVN 2-3)  
**Date Receipt:** 2022/06/14 12:25:07  
**Date Report Released:** 2022/06/29 09:45:46  
**Sample Type:** Plant Material  
**Package Condition:** Intact  
**Received By:** PMYBURGH  
**Sample Amount:** 5 gram  
**Tamper Proof:** No

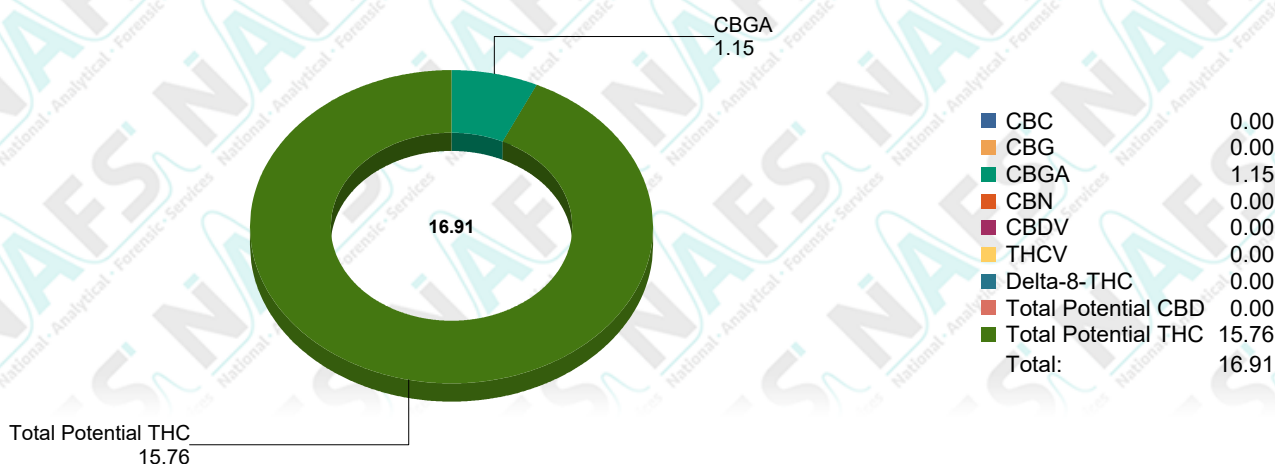


**Test Name:** TM006.3 (Potency Cannabis HPLC) (220607-007-032)

**Specification:** N/A  
**Test Method:** \*TM006.3  
**Sampling Method:** SH007

Analyte	Results	*Std Dev.	*Spec Limits
CBC	ND % Weight	% Weight	N/A
CBD	ND % Weight	% Weight	N/A
CBD-A	ND % Weight	% Weight	N/A
CBD-V	ND % Weight	% Weight	N/A
CBG	ND % Weight	% Weight	N/A
CBG-A	1.152 % Weight	+ - 0.212 % Weight	N/A
CBN	ND % Weight	% Weight	N/A
Delta-8-THC	ND % Weight	% Weight	N/A
Delta-9-THC	1.794 % Weight	+ - 0.074 % Weight	N/A
THC-A	15.924 % Weight	+ - 1.310 % Weight	N/A
THC-V	ND % Weight	% Weight	N/A
Total Potential CBD	ND % Weight	% Weight	N/A
Total Potential THC	15.760 % Weight	+ - 1.075 % Weight	N/A

**Analyst:** AWRBKA 2022/06/27 13:38



\*ND (Not Detected)

\*The current test method version is Validated

\*Standard Deviation (Uncertainty of measurement of applicable duplicate sample)

\*Specification Limits (Specified according to pharmacopeial or client specification limits where applicable)

## Interpretations and Opinions:

Samples were analyzed as received, subsampling of the interlaboratory comparison was performed by the client. Results may vary according to the sampling plan employed to obtain a representative sample for each laboratory.

## Additions, Deviations & Exclusions:

None

*It should be noted that NAFS will only analyze the sample/s received. This sample cannot be regarded as representative of entire batch or crop. It is the responsibility of the client to ensure a representative sample is taken in an appropriate tamper proof sample container. NAFS cannot be held liable for negligent handling, storage and transport of client samples, prior to receipt. Any complaints may be directed toward NAFS using [info@nafs.co.za](mailto:info@nafs.co.za) (QA005)*

## Laboratory Manager

**Released By:** Henrick Viviers

**Released On:** 2022/06/29 09:45:46

*This certificate of analysis shall not be reproduced except in full, without written approval of NAFS. The information contained in this communication from the sender is confidential. It is intended solely for use by the recipient and others authorized to receive it. If you are not the recipient, you are hereby notified that any disclosure, copying, distribution or taking action in relation of the contents of this information is strictly prohibited and may be unlawful. The results obtained may be used for anonymous statistical research purposes. NAFS cannot be held liable for any loss or damage arising from, directly or indirectly related to, sample test*